



**\$AVE  
\$30K**

**HOTTEST  
LUCAS HOUSE + LAND  
PACKAGES**

T&Cs apply

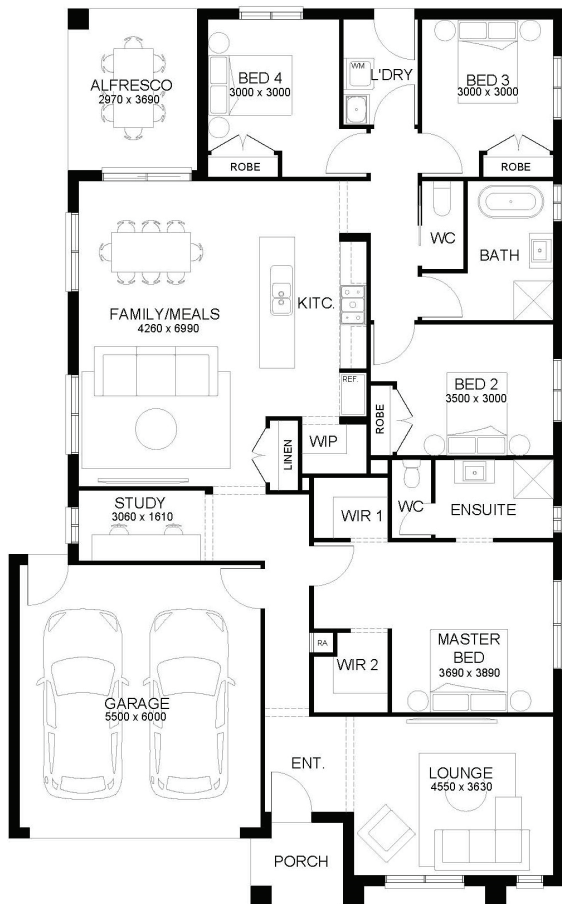
SUITS 14.0M+ BLOCK

HOUSE & LAND PACKAGE

**\$680,540\***

Lot 514 Lucas, LUCAS

4 2 2 2



## NEWBURY 232

Lucas

LOT SIZE 512 sqm

HOUSE AREA 232.08 sqm

### Inclusions

- Site Cost Allowance Including Rock Removal
- 7-star energy rated homes
- Double-glazed awning windows and sliding doors (where required)
- 40mm edge category 1 stone bench top
- 1500mm freestanding bath
- Brickwork above all elevations including windows, external doors and over garage with face brick.
- Evaporative cooling throughout
- 900mm appliances
- Tiled shower bases
- Colour on concrete driveway (up to 35m2)
- Overhead cupboards to kitchen

**For more information contact  
Lee Dern on 0456 767 073**

\*Allowance Package Current As Of 14/01/2025. Pricing Is Based On Developer Engineering Plans, Estate Guidelines And Plan Of Subdivision. Land Availability And Pricing Supplied By The Developer Are Subject To Change Without Notice. All House And Land Packages Are Subject To Developer Approval. Price Does Not Include Any Stamp Duty, Government, Legal Or Bank Charges. \*Total Package Price Minus \$10K FHOG (Subject To SRO Eligibility) The First Home Owners Grant Is A Government Incentive And Any Claims Will Be Lodged Externally. Photographs In This Flyer May Depict Fixtures, Finishes And Features Either Not Supplied Or Are Upgrade Options By Sherridon. All Floorplan, Facade Images And Photographs Have Been Used For Illustrative Purposes Only (Refer To Contract Documentation For Full Details) And May Not Represent The Final Product As Shown. Please Refer To Your Friendly New Home Consultant For An Exact List Of Inclusions With Detail. Sherridon Homes Reserves The Right To Amend Specification And Price Without Notice. VIC Builder's Licence: CDB-U 50039v

Call 1300 188 668 or visit [sherridonhomes.com.au](http://sherridonhomes.com.au)

Sherridon Pty Ltd | 56 Barclay Road, Derrimut, Victoria 3026 | P +61 3 8390 5000 | E [info@sherridonhomes.com.au](mailto:info@sherridonhomes.com.au) | Registered Building Practitioner CDB-U50039