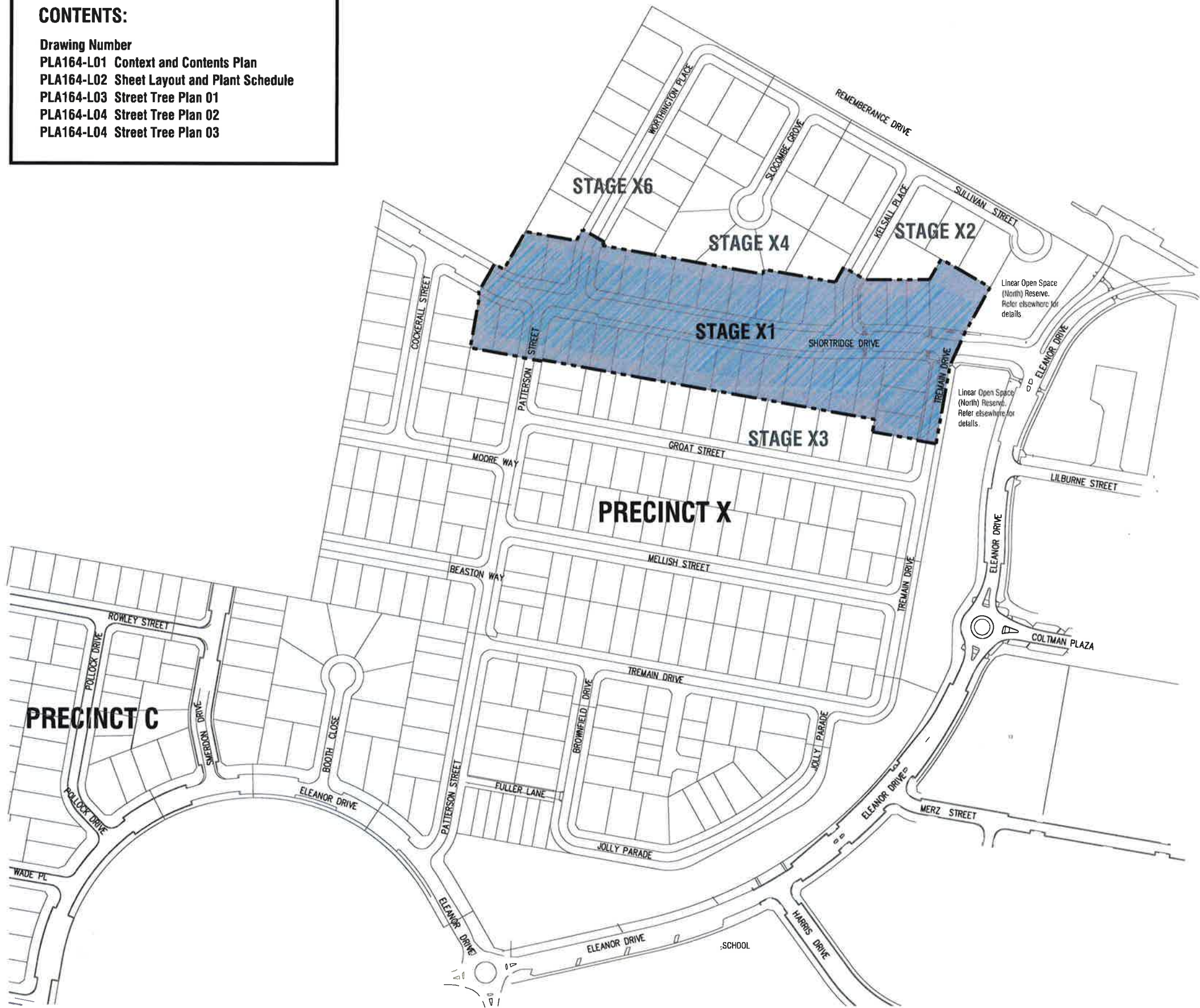


CONTENTS:

- Drawing Number
- PLA164-L01 Context and Contents Plan
- PLA164-L02 Sheet Layout and Plant Schedule
- PLA164-L03 Street Tree Plan 01
- PLA164-L04 Street Tree Plan 02
- PLA164-L04 Street Tree Plan 03

TP1	Town Planning Issue	AD	04.05.17
P1	Preliminary Issue	AD	12.04.17
Revision	Description	Issued	Date
APPROVAL ISSUE			

- Notes**
1. All dimensions to be checked on site before commencing work. All measurements are in metres, unless otherwise shown.
 2. The locations of underground services and light poles are indicative only - refer to engineering drawings for design service details.
 3. The location and depth of services shall be verified on site prior to the commencement of works. The Contractor shall be liable for any damage to services during the landscape works.



Planning and Environment Act 1987
 BALLARAT PLANNING SCHEME
 This plan is endorsed in accordance with condition 3 of
 Planning Permit No PLP/2016/141
 Planning Permit Issue Date 31/8/2016
 Signed [Signature]
 Authorised Officer for and on behalf of
 CITY OF BALLARAT
 Date 13/7/2017

Page 1 of 5

CONTEXT PLAN - Stage X1 Lucas (nts)



Client / Project: **Integra**
 Stage X1
 Lucas, Ballarat

Drawing Title: **Context and Contents Plan**

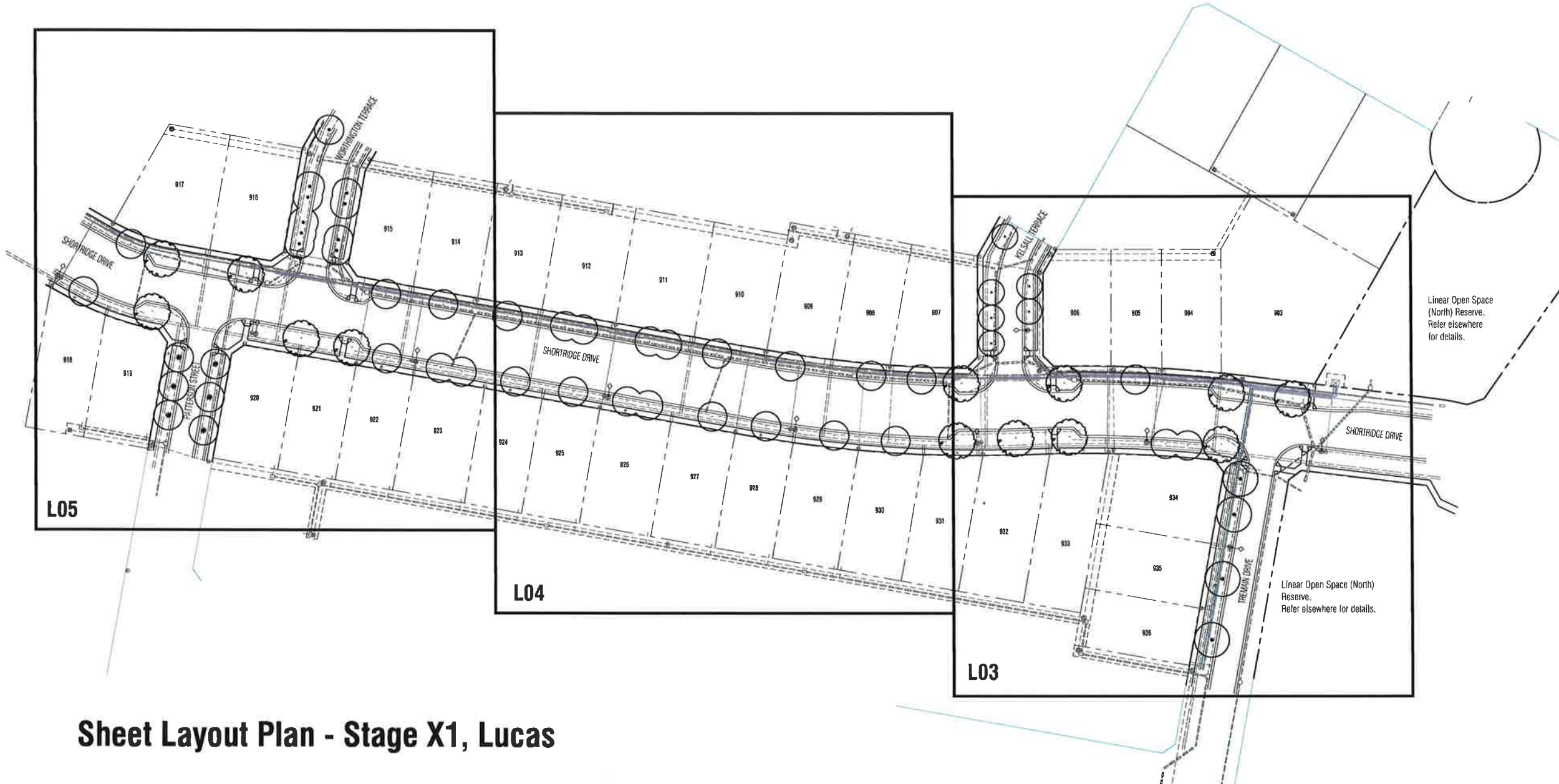
Drawn	AD	Approved	RH	Date	04.05.17
Scale (A1)	NTS	Scale (A3)	NTS	Sheet	1 of 5

This drawing and design is protected by copyright © PLOT Landscape Architects Pty Ltd.

Drawing Number: **PLA164-L01** Revision: **TP1**

Notes

- All dimensions to be checked on site before commencing work. All measurements are in metres, unless otherwise shown.
- The locations of underground services and light poles are indicative only - refer to engineering drawings for design service offsets.
- The location and depth of services shall be verified on site prior to the commencement of works. The Contractor shall be liable for any damage to services during the landscape works.
- Standard Street Tree Offsets.
 - It is assumed that all Underground Cable in close proximity to the 'tree zone' * (5m diameter x 600mm depth) shall be within conduits or have cover slabs to provide a higher level of infrastructure protection. (*Refer 12.0 'Distribution Construction Standard Underground Trenching GA211' by Clijpwater and Powercor).
 - Standard offset from the back of kerb is 1.2m unless otherwise shown.
 - Minimum setback of 2.0m to service assets including pits and conduit crossings.
 - Minimum setback of 1.2m to domestic service lapping points and stormwater outlets.
 - Minimum setback of 1.2m to footpath crossings and 3.0m to driveways where they are existing or known.
 - Minimum setback of 3.0m to fire hydrants.
 - Minimum setback of 5.0m to light poles.
- Proposed Street Trees.
 - Species are in general accordance with the Lucas Landscape Masterplan, Precinct X (dated 13 February 2017).
 - Trees are planted to allow a driveway within 7.0m from the Title Boundary where possible.
 - Tree position in front of lots may change slightly due to 'actual' location of services, and constructed driveway crossings.
 - Setback from intersection (kerb) shall be a minimum of 10m in accordance with City of Ballarat Landscape Design Manual (LDM).
- Planting. All trees shall be planted in accordance with LDM, unless otherwise specified.
- Mulch. Mulch shall be recycled hardwood (or similar approved) in general accordance with LDM, unless otherwise specified.
- Grass Seeding. Reseed nature strips and other grassed areas where there has been disturbance due to landscape works with a 50:50 ryegrass:mix, unless otherwise specified.



Sheet Layout Plan - Stage X1, Lucas

Master Plant Schedule - Stage X1, Lucas

Code	Botanical Name	Common Name	Plant Size	Qty
Trees				
ALI	<i>Allocasuarina littoralis</i>	Black She-oak	16 ltr cont.	10
BJR	<i>Brachychiton 'Jerilderee Red'</i>	Jerilderee Red Brachychiton	40 ltr cont.	6
MAE	<i>Melia azedarach 'Elite'</i>	White Cedar	40 ltr cont.	6
PCC	<i>Pyrus calleryana 'Aristocrat'</i>	'Aristocrat' Flowering Pear	40 ltr cont.	27
UPA	<i>Ulmus parvifolia 'Todd'</i>	'Todd' Chinese Elm	40 ltr cont.	4
USAG	<i>Ulmus 'Sapporo Autumn Gold'</i>	Sapporo Autumn Gold Elm	40 ltr cont.	13

Planning and Environment Act 1987

BALLARAT PLANNING SCHEME

This plan is endorsed in accordance with condition 3 of

Planning Permit No PLP/2016/141

Planning Permit Issue Date 31/8/2016

Signed [Signature]

Authorised Officer for and on behalf of
CITY OF BALLARAT

Date 13/7/2017

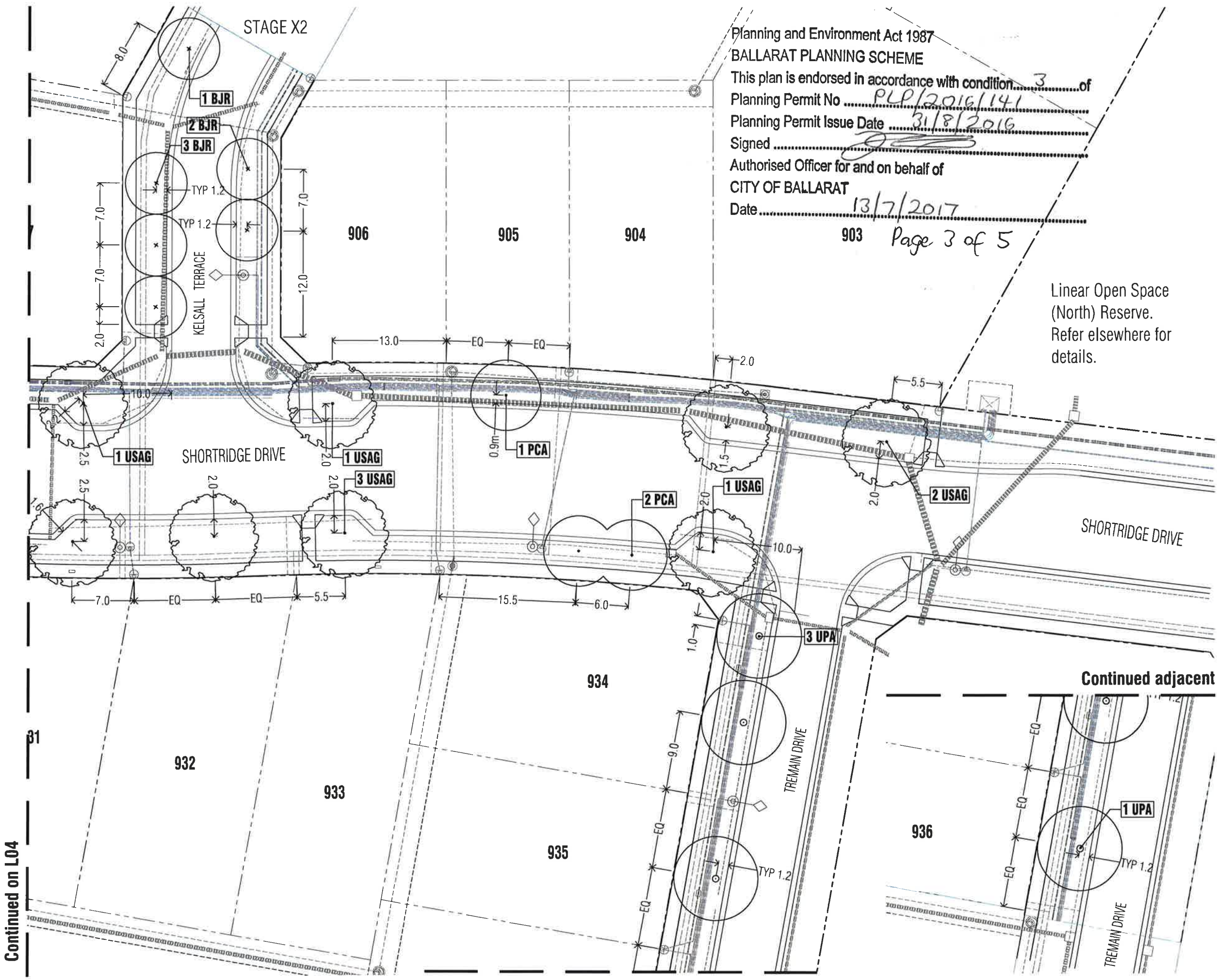
Page 2 of 5



Client/Project:
 Stage X1
 Lucas, Ballarat

Drawing Title:
Sheet Layout and Plant Schedule

Drawn: AD, Approved: RH, Date: 04.05.17, North
 Scale (A1): NTS, Scale (A3): NTS, Sheet: 2 of 5
This drawing and design is protected by copyright © PLOT Landscape Architects Pty Ltd



Planning and Environment Act 1987
 BALLARAT PLANNING SCHEME
 This plan is endorsed in accordance with condition 3 of
 Planning Permit No PLP/2016/141
 Planning Permit Issue Date 31/8/2016
 Signed [Signature]
 Authorised Officer for and on behalf of
 CITY OF BALLARAT
 Date 13/7/2017

Page 3 of 5

Linear Open Space
 (North) Reserve.
 Refer elsewhere for
 details.

TP1 Town Planning Issue	AD	04.05.17
P1 Preliminary Issue	AD	12.04.17
Revision Description		
APPROVAL ISSUE		

- Notes**
- All dimensions to be checked on site before commencing work. All measurements are in metres, unless otherwise shown.
 - The locations of underground services and light poles are indicative only - refer to engineering drawings for design service offsets.
 - The location and depth of services shall be verified on site prior to the commencement of works. The Contractor shall be liable for any damage to services during the landscape works.
 - Standard Street Tree Offsets.
 - It is assumed that all Underground Cable in close proximity to the 'tree zone' * (5m diameter x 600mm depth) shall be within conduits or have cover slabs to provide a higher level of infrastructure protection. (*Refer 12.0 'Distribution Construction Standard Underground Trenching GA211' by Citypower and Powercor).
 - Standard offset from the back of kerb is 1.2m unless otherwise shown.
 - Minimum setback of 2.0m to service assets including pits and conduit crossings.
 - Minimum setback of 2.0m to domestic service tapping points and stormwater outlets.
 - Minimum setback of 1.2m to footpath crossings and 3.0m to driveways where they are existing or known.
 - Minimum setback of 3.0m to fire hydrants.
 - Minimum setback of 5.0m to light poles.
 - Proposed Street Trees.
 - Species are in general accordance with the Lucas Landscape Masterplan, Precinct X (dated 13 February 2017).
 - Trees are planted to allow a driveway within 7.0m from the Title Boundary where possible.
 - Tree position in front of lots may change slightly due to 'actual' location of services, and constructed driveway crossings.
 - Setback from intersection (kerb) shall be a minimum of 10m in accordance with City of Ballarat Landscape Design Manual (LDM).
 - Planting. All trees shall be planted in accordance with LDM, unless otherwise specified.
 - Mulch. Mulch shall be recycled hardwood (or similar approved) in general accordance with LDM, unless otherwise specified.
 - Grass Seeding. Reseed nature strips and other grassed areas where there has been disturbance due to landscape works with a 50:50 ryegrass mix, unless otherwise specified.
 - Plant Schedule. Refer to sheet PLA164-L02 for Plant Schedule.

- Legend**
- Proposed Street Trees - *Pyrus calleryana* 'Avisiocral' (Ornamental Pear)
 - Proposed Street Trees - *Ulmus 'Sapporo Autumn Gold'* (Sapporo Autumn Gold Elm)
 - Proposed Street Trees - *Brachydon* 'Jerdonee Red'
 - Proposed Street Trees - *Ulmus parvifolia* (Chinese Elm)
 - Plant Label and Code



Client / Project:
Integra
 Stage X1
 Lucas, Ballarat

Street Tree Plan 01			
Drawn	Approved	Date	No. 01
AD	RH	04.05.17	
Scale (1:1)	Scale (1:1)	Sheet	
1:200	1:400	3 of 5	
This drawing and design is protected by copyright © 2017 Plot Landscape Architects Pty Ltd.			
Quantity Number	Revision		

PLA164-L03 TP1

Continued on L04

Continued adjacent detail

Continued adjacent

Notes

- All dimensions to be checked on site before commencing work. All measurements are in metres, unless otherwise shown.
- The locations of underground services and light poles are indicative only - refer to engineering drawings for design service offsets.
- The location and depth of services shall be verified on site prior to the commencement of works. The Contractor shall be liable for any damage to services during the landscape works.
- Standard Street Tree Offsets.
 - It is assumed that all Underground Cable in close proximity to the 'tree zone' * (5m diameter x 600mm depth) shall be within conduits or have cover slabs to provide a higher level of infrastructure protection. (*Refer 12.0 'Distribution Construction Standard Underground Trenching GA211' by Citypower and Powercor).
 - Standard offset from the back of kerb is 1.2m unless otherwise shown.
 - Minimum setback of 2.0m to service assets including pits and conduit crossings.
 - Minimum setback of 2.0m to domestic service tapping points and stormwater outlets.
 - Minimum setback of 1.2m to footpath crossings and 3.0m to driveways where they are existing or known.
 - Minimum setback of 3.0m to fire hydrants.
 - Minimum setback of 5.0m to light poles.
- Proposed Street Trees.
 - Species are in general accordance with the Lucas Landscape Masterplan, Precinct X (dated 13 February 2017).
 - Trees are planted to allow a driveway within 7.0m from the Title Boundary where possible.
 - Tree position in front of lots may change slightly due to 'actual' location of services, and constructed driveway crossings.
 - Setback from intersection (kerb) shall be a minimum of 10m in accordance with City of Ballarat Landscape Design Manual (LDM).
- Planting. All trees shall be planted in accordance with LDM, unless otherwise specified.
- Mulch. Mulch shall be recycled hardwood (or similar approved) in general accordance with LDM, unless otherwise specified.
- Grass Seeding. Reseed nature strips and other grassed areas where there has been disturbance due to landscape works with a 50:50 rye:couch mix, unless otherwise specified.
- Plant Schedule. Refer to sheet PLA164-L02 for Plant Schedule.

Legend

- Proposed Street Trees - *Pyrus calleryana* 'Aristocrat' (Ornamental Pear)
- Plant Label and Code



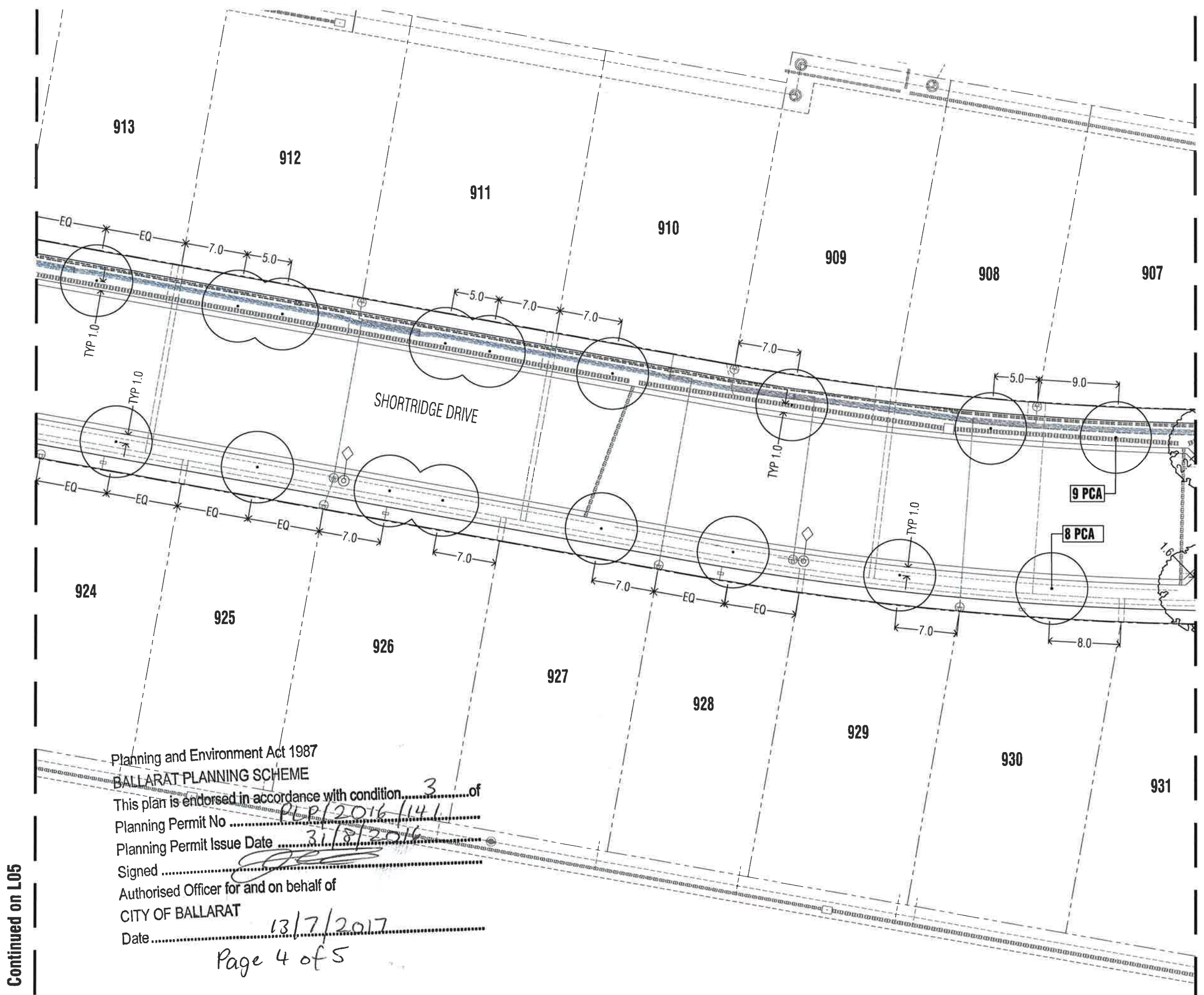
Client / Project:

Integra
Stage X1
Lucas, Ballarat

Street Tree Plan 02

Drawn: AD	Approved: RH	Date: 04.05.17	North
Scale (A1): 1:200	Scale (A3): 1:400	Sheet: 4 of 5	

This drawing and design is protected by copyright © PLOT Landscape Architects Pty Ltd.



Planning and Environment Act 1987
BALLARAT PLANNING SCHEME
 This plan is endorsed in accordance with condition 3 of
 Planning Permit No PLP/2016/1411
 Planning Permit Issue Date 31/8/2016
 Signed [Signature]
 Authorised Officer for and on behalf of
CITY OF BALLARAT
 Date 13/7/2017
 Page 4 of 5

Continued on L05

Continued on L03

