

PLAN OF SUBDIVISION

EDITION 1

PS 742241 N

LOCATION OF LAND

PARISH : CARDIGAN
 TOWNSHIP :
 SECTION : 10
 CROWN ALLOTMENT : 11 (PART) & 12 (PART)
 CROWN PORTION :
 TITLE REFERENCE : VOL. 8598 FOL. 010
 VOL. FOL.
 VOL. FOL.
 LAST PLAN REFERENCE : LOT 1, TP 369702T &
 LOT G, PS 803277D
 LOT P, PS 749251W
 POSTAL ADDRESS : REMEMBRANCE DRIVE,
 (At time of subdivision) LUCAS, 3350.
 MGA94 Co-ordinates
 (of approx centre of land in plan) E 745 660 ZONE: 54
 N 5 841 335 GDA 94

COUNCIL CERTIFICATION AND ENDORSEMENT
 COUNCIL NAME: CITY OF BALLARAT

VESTING OF ROADS AND/OR RESERVES

NOTATIONS

| IDENTIFIER | COUNCIL/BODY/PERSON |
|--------------|----------------------------|
| R1 ROAD | CITY OF BALLARAT |
| RESERVE No.1 | CITY OF BALLARAT |
| RESERVE No.2 | POWERCOR AUSTRALIA LIMITED |

LOTS 1 TO 902 (ALL INCLUSIVE) HAVE BEEN OMITTED FROM THIS PLAN.

NOTATIONS

DEPTH LIMITATION does not apply to the land in this plan
 SURVEY:
 This plan is based on survey (see BP 2657W).
 STAGING:
 This is not a staged subdivision.
 Planning Permit No. PLP/2016/141
 This survey has been connected to permanent marks No(s). 32, 53 & 56
 In Proclaimed Survey Area No. 49.

LUCAS
STAGE X1
 34 LOTS,
 BALANCE LOTS
 X2, X3, Q

EASEMENT INFORMATION

LEGEND: A - Appurtenant Easement E - Encumbering Easement R - Encumbering Easement (Road)

| Easement Reference | Purpose | Width (Metres) | Origin | Land Benefited/In Favour Of |
|--------------------|---------------------------------|----------------|--|--|
| E-1 & E-2 | PIPELINES OR ANCILLARY PURPOSES | 3 | THIS PLAN - SECTION 136 OF THE WATER ACT 1989 | CENTRAL HIGHLANDS REGION WATER CORPORATION |
| E-2 | DRAINAGE | 3 | THIS PLAN | CITY OF BALLARAT |
| E-3 | PIPELINES OR ANCILLARY PURPOSES | 3 | PS 721365M - SECTION 136 OF THE WATER ACT 1989 | CENTRAL HIGHLANDS REGION WATER CORPORATION |

TGM Group Ballarat
 1315 Sturt Street
 Ballarat Vic 3350
 T 03 5330 8888
 F 03 5333 3815
 PO Box 563W
 Ballarat West Vic 3350
 ABN 11 125 568 461
 www.tgmgroup.com
 JAS-ANZ Accredited: Quality ISO 9001 - OH&S AS/NZS 4801 - Environment ISO 14001



FILE REF: 10014-26-PS742241N(X1)-12.dwg
 DATE: 07/03/2017

ORIGINAL SHEET
 SIZE: A3

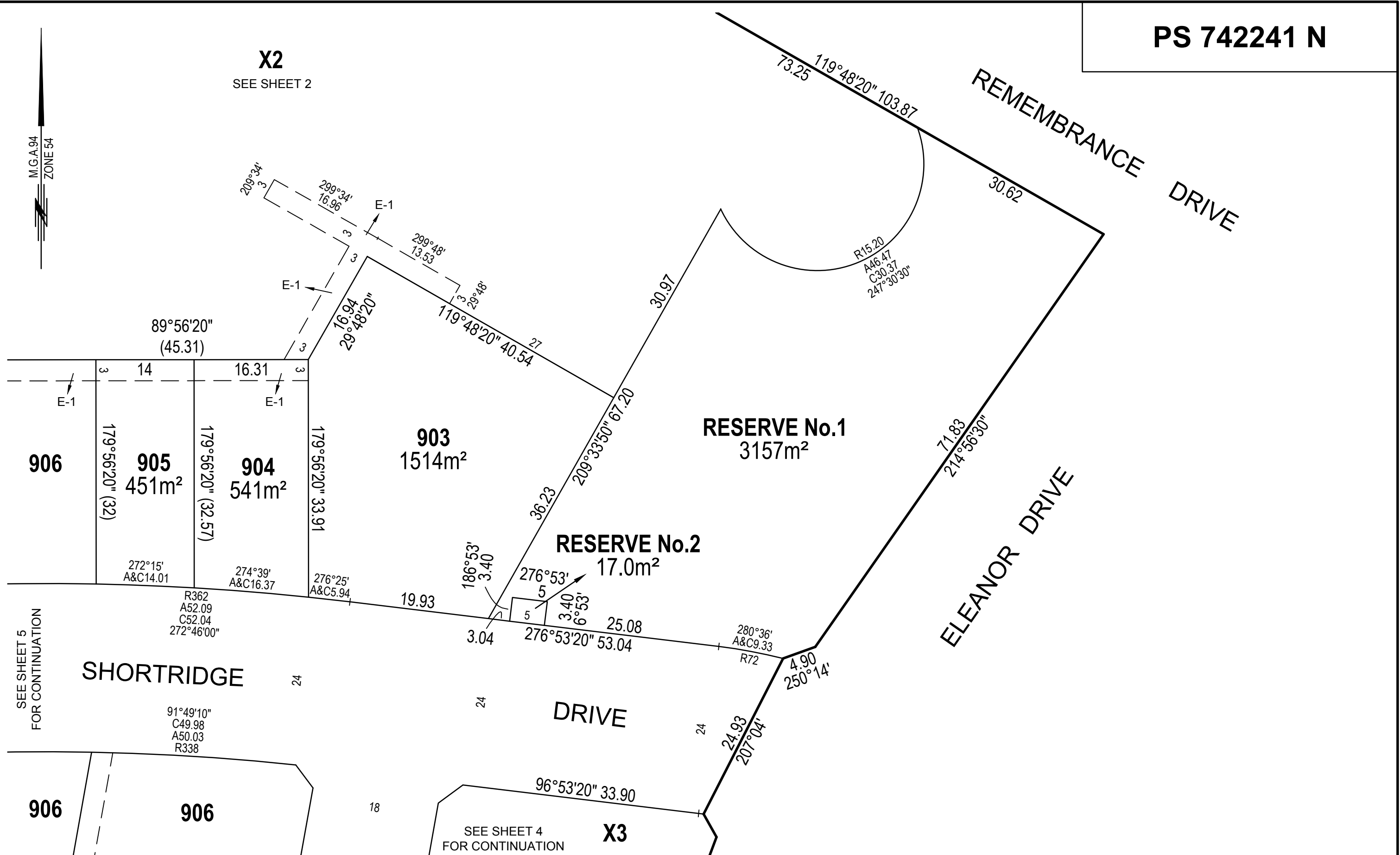
SHEET 1 OF 8

SURVEYOR: GERALD JOE DONN
 VERSION: 12

DRAFT - FOR TOWN PLANNING / MARKETING PURPOSES ONLY. THIS PLAN IS NOT APPROVED BY COUNCIL AND NOT REGISTERED AT LAND VICTORIA.

X2
SEE SHEET 2

M.G.A.94
ZONE 54



SEE SHEET 5
FOR CONTINUATION

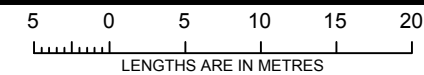
SEE SHEET 4
FOR CONTINUATION

TGM Group Ballarat
1315 Sturt Street
Ballarat Vic 3350
T 03 5330 8888
F 03 5333 3815
PO Box 563W
Ballarat West Vic 3350
ABN 11 125 568 461
www.tgmgroup.com
JAS-ANZ Accredited: Quality ISO 9001 - OH&S AS/NZS 4801 - Environment ISO 14001



Ballarat | Melbourne | Geelong

SCALE
1:500



ORIGINAL SHEET
SIZE: A3

SHEET 3

SURVEYOR: GERALD JOE DONN
VERSION: 12

PS 742241 N

SEE SHEET 3 FOR CONTINUATION

RESERVE No.1

RESERVE No.2

906

905

904

903

R362
A52.09
C52.04
272°46'00"

276°53'20" 53.04

R72
A&C9.33
280°36'

R1
1.228ha

SHORTRIDGE DRIVE

91°49'10"
C49.98
A50.03
R338

97°19'
A&C0.71
R48

SEE SHEET 5 FOR CONTINUATION

24

24

24

A(29.20)
C(29.19)
93°35'

934
682m²

933

935
576m²

936
512m²

TREMAIN DRIVE

X3

SEE SHEET 2

ELEANOR DRIVE

X3
SEE SHEET 2

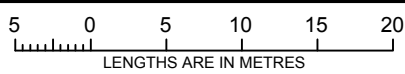
SEE SHEET 2 FOR CONTINUATION

M.G.A.94
ZONE 54

TGM Group Ballarat
1315 Sturt Street
Ballarat Vic 3350
T 03 5330 8888
F 03 5333 3815
PO Box 563W
Ballarat West Vic 3350
ABN 11 125 568 461
www.tgmgroup.com
JAS-ANZ Accredited: Quality ISO 9001 - OH&S AS/NZS 4801 - Environment ISO 14001



SCALE
1:500



ORIGINAL SHEET
SIZE: A3

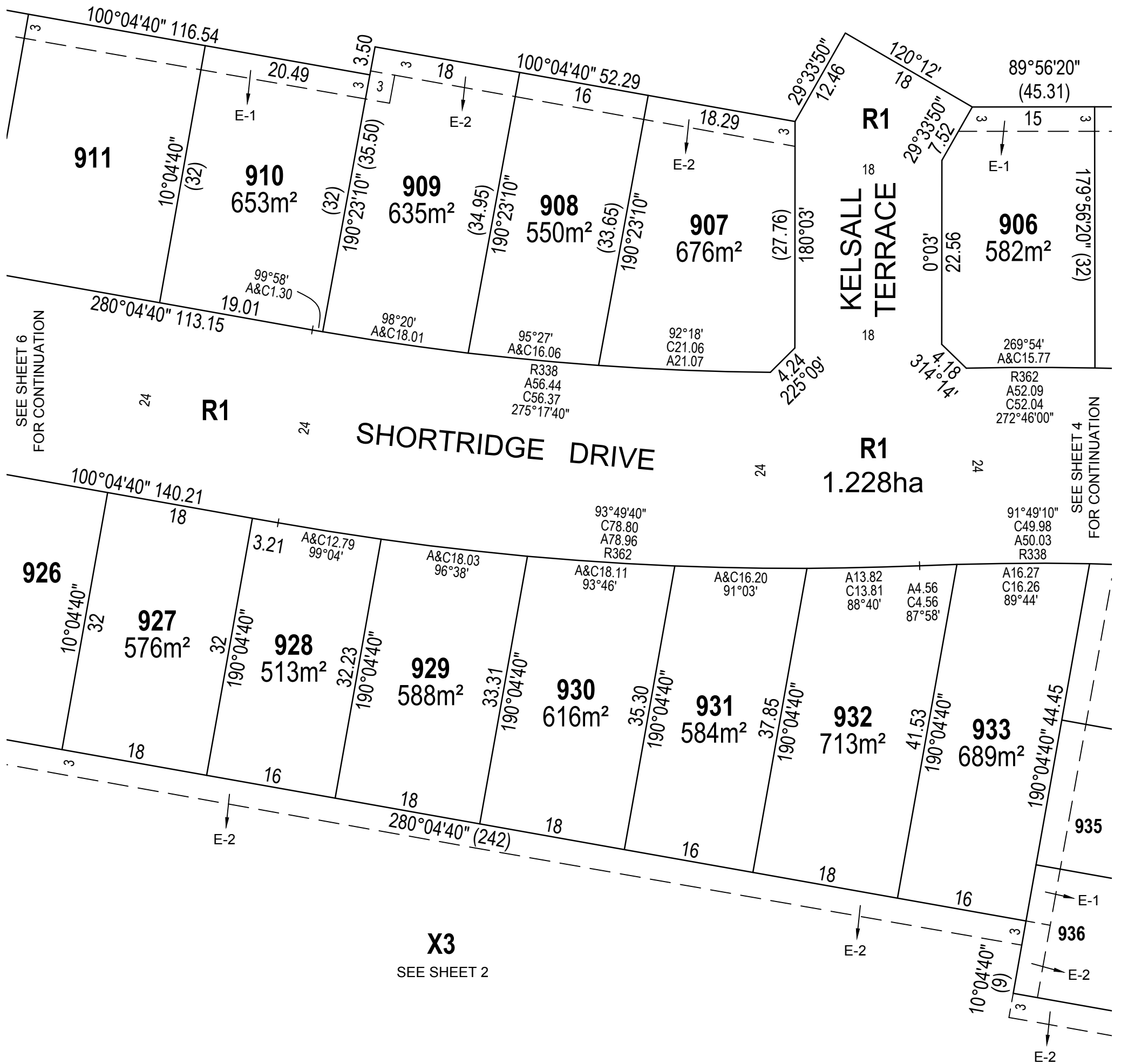
SHEET 4

SURVEYOR: GERALD JOE DONN
VERSION: 12

DRAFT - FOR TOWN PLANNING / MARKETING PURPOSES ONLY. THIS PLAN IS NOT APPROVED BY COUNCIL AND NOT REGISTERED AT LAND VICTORIA.

M.G.A.94
ZONE 54

X2
SEE SHEET 2



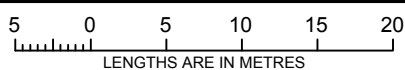
SEE SHEET 6
FOR CONTINUATION

SEE SHEET 4
FOR CONTINUATION

TGM Group Ballarat
1315 Sturt Street
Ballarat Vic 3350
T 03 5330 8888
F 03 5333 3815
PO Box 563W
Ballarat West Vic 3350
ABN 11 125 568 461
www.tgmgroup.com
JAS-ANZ Accredited: Quality ISO 9001 - OH&S AS/NZS 4801 - Environment ISO 14001



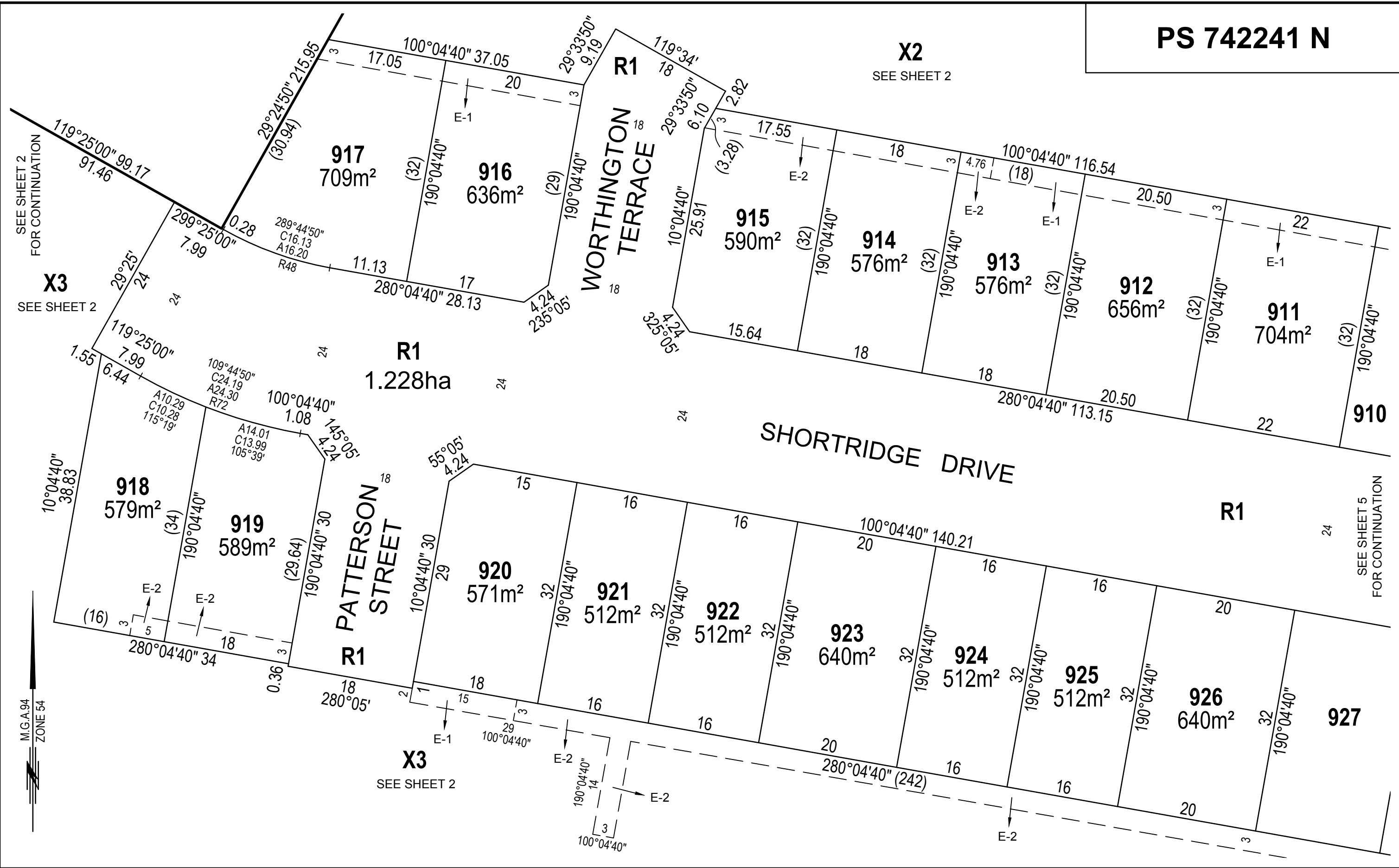
SCALE
1:500



ORIGINAL SHEET
SIZE: A3

SHEET 5

SURVEYOR: GERALD JOE DONN
VERSION: 12



SEE SHEET 2
FOR CONTINUATION

X3
SEE SHEET 2


X2
SEE SHEET 2

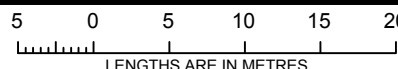
SEE SHEET 5
FOR CONTINUATION

M.G.A.94
ZONE 54



TGM Group Ballarat
 1315 Sturt Street
 Ballarat Vic 3350
 T 03 5330 8888
 F 03 5333 3815
 PO Box 563W
 Ballarat West Vic 3350
 ABN 11 125 568 461
 www.tgmgroup.com
 Ballarat | Melbourne | Geelong
 JAS-ANZ Accredited: Quality ISO 9001 - OH&S AS/NZS 4801 - Environment ISO 14001



| | |
|----------------|--|
| SCALE 1:500 |  <p>LENGTHS ARE IN METRES</p> |
|----------------|--|

| | |
|----------------------------|---------|
| ORIGINAL SHEET SIZE: A3 | SHEET 6 |
|----------------------------|---------|

SURVEYOR: GERALD JOE DONN
 VERSION: 12

DRAFT - FOR TOWN PLANNING / MARKETING PURPOSES ONLY. THIS PLAN IS NOT APPROVED BY COUNCIL AND NOT REGISTERED AT LAND VICTORIA.

M.G.A.94
ZONE 54

SEE SHEET 7 FOR
CONTINUATION

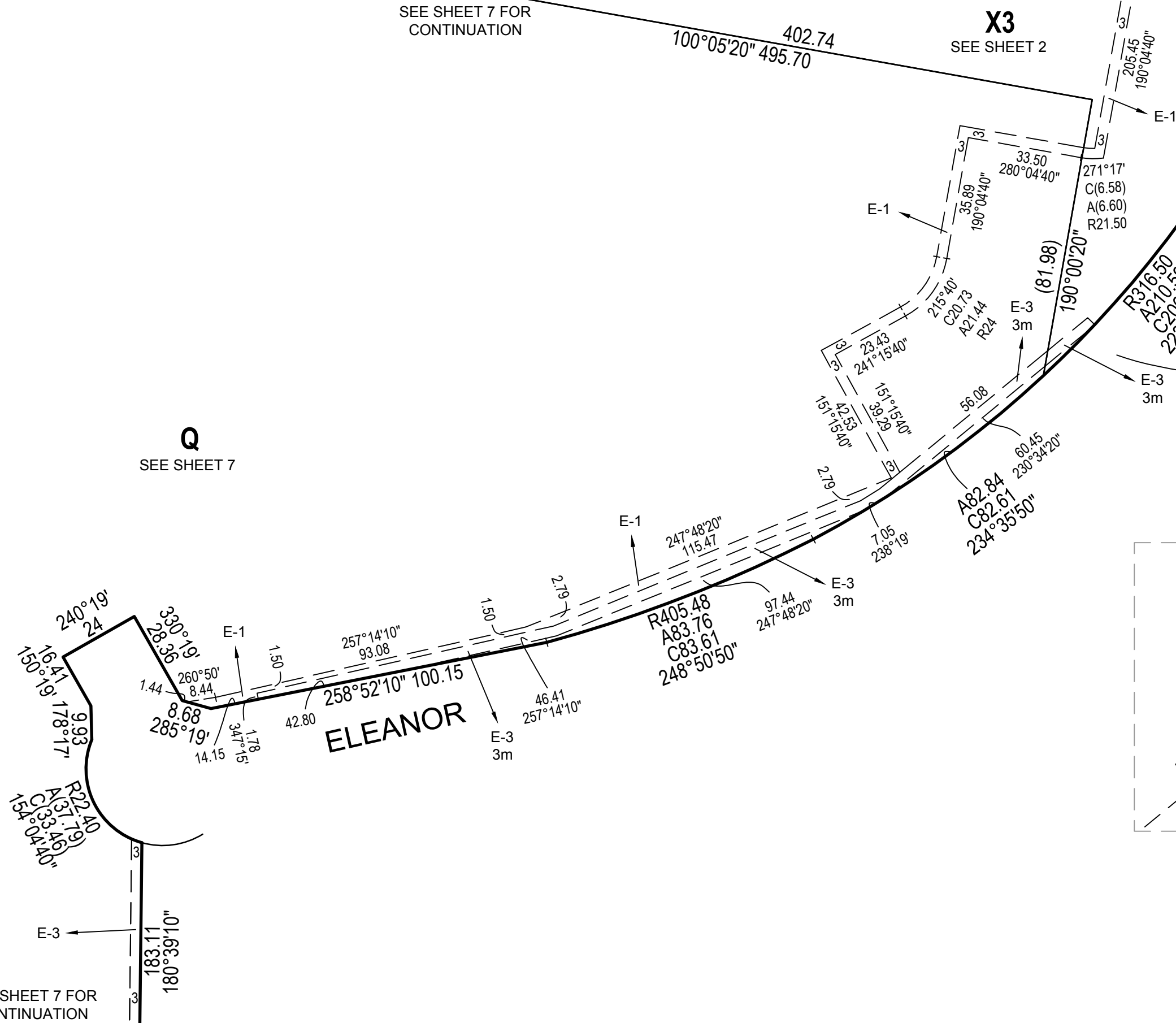
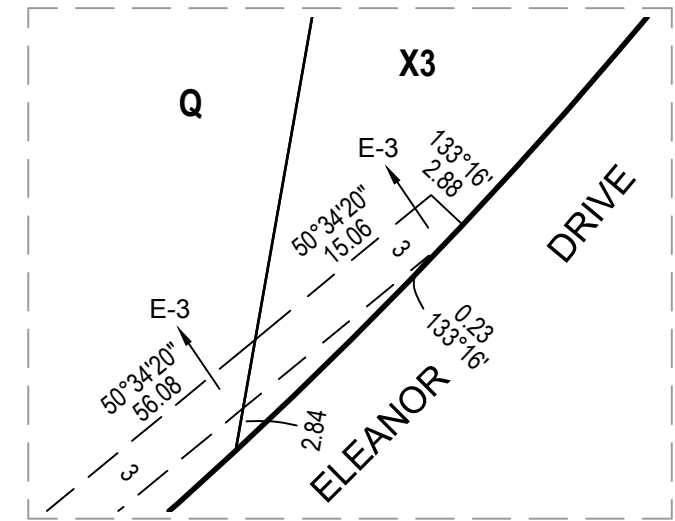
X3
SEE SHEET 2

PS 742241 N

SEE SHEET 2 FOR
CONTINUATION

Q
SEE SHEET 7

SEE ENLARGEMENT
SCALE 1:500



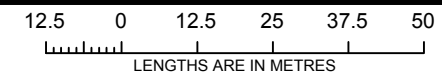
SEE SHEET 7 FOR
CONTINUATION

TGM Group Ballarat
 1315 Sturt Street
 Ballarat Vic 3350
 T 03 5330 8888
 F 03 5333 3815
 PO Box 563W
 Ballarat West Vic 3350
 ABN 11 125 568 461
 www.tgmgroup.com
 JAS-ANZ Accredited: Quality ISO 9001 - OH&S AS/NZS 4801 - Environment ISO 14001



Ballarat | Melbourne | Geelong

SCALE
1:1250



ORIGINAL SHEET
SIZE: A3

SHEET 8

SURVEYOR: GERALD JOE DONN
VERSION: 12

DRAFT - FOR TOWN PLANNING / MARKETING PURPOSES ONLY. THIS PLAN IS NOT APPROVED BY COUNCIL AND NOT REGISTERED AT LAND VICTORIA.